



LWV LEHIGH COUNTY VOTER

MARK YOUR CALENDAR!

June

Thurs 4:00 Board Meeting
11 P.m. Sunrise Senior Living

July

Mon 10:00 Summer Brunch
13 A.m. Margie Dunn's House

August

Thurs 4:00 Board Meeting
13 P.m. Sunrise Senior Living

Thurs 4:00 Naturalization Ceremonies, Old Lehigh County Courthouse
27 p.m.

INSIDE THIS ISSUE:

President's Message	1
Notes from the Annual Meeting	2
News From the Board	2
!Hot Topics! Needs A New Venue	1
Naturalization Ceremonies	1

PRESIDENT'S MESSAGE

Dear League Friends,

We have completed another successful year of service to the citizens of the Lehigh Valley. The Board of Directors has, as is usual, done an excellent job using their unique abilities to complete their individual portfolios. They are always willing to step in to support or assist one another when the need arises.

We have maintained and even improved our financial health in a difficult economy thanks to our

savvy treasurer Pat Hoffman. The program continues to be interesting and diverse under the able management of Pat Swan. There are always positive comments from those who attend the Hot Topics Luncheons. Our publications continue to maintain high standards; and thanks to Ann Bartholomew, have become more available to the public through our website.

It is with sadness and regret we announce that Molly Faust is no longer able to serve as the Edi-

tor of our *Voters Guide* and Mary Anne Stinner, our long-time Action Chair is also leaving the board. They have done fantastic work with their respective portfolios. We will miss them.

It is a privilege to work with this talented and dedicated group of individuals.

Respectfully submitted,
Mary Anne Rood, President

!HOT TOPICS! NEEDS A NEW VENUE

If you have any suggestions for a new place for the Hot Topics lunch meetings, they would be greatly appreciated since Ruffino's can no longer accommodate us at their new location.

Preferably, It should be in Allentown so our speakers who come from City Hall and the Lehigh County Government Center don't have too far to travel.

If you have a suggestion, please contact me by phone at: 610-435-4148, or e-mail burkeswan@rcn.com

Pat Swan

NATURALIZATION CEREMONIES

Naturalization was held on Thursday, May 28 in the Old Lehigh County Courthouse. 42 candidates were naturalized in the ceremony that was presided over by Judge Maria L. Dantos.

Anyone who would like to experience this ceremony is welcome to attend. You will see many happy faces in the courtroom from many different countries.

The ceremonies are held approximately four times each year. The next ceremony will be held on August 27 at 4:00 p.m.

Caryn Shoenthal

NEWS FROM THE BOARD —

MAY 2009

The LWVLC annual meeting was held on May 20, 2009 at Mangoes Restaurant with nineteen members present.

Business:

- A balanced budget was adopted. The fiscal records for 2008-2009 received a positive audit.
- The revision of the Local Water Position was accepted.
- The decision was made to continue the Hot Topics Luncheons.
- The slate of officers and board members presented by the nominating committee was approved. Mary Anne Stinner, Action Chairwoman; and Molly Faust, Voters' Guide Coordinator, have resigned and those positions remain vacant.

Your interest and involvement is needed —

- Suggestions for Hot Topics Luncheon topics can be sent to Pat Swan along with ideas for a new location with adequate parking and reasonable lunch prices. Vote to continue these informative events with your attendance in September.
- Members who would consider undertaking the Action and Voters' Guide positions on the Board are encouraged to speak with Mary Anne and Molly.
- The Board anticipates organizing a Candidates' Night for Macungie. Anyone, especially those living in Macungie, interested in developing questions and assisting should contact Ann Bartholomew.
- The Board will explore working with Common Cause in their effort to implement campaign finance reform for the U.S. House and

Senate. Watch for updates online and in the Voter.

- The LWVLC position on Transportation Needs in the Lehigh Valley will be reviewed and updated this year under the leadership of Mary Anne Rood and Barbara Williams. Watch for opportunities to have your voice heard.

Board Meetings – Open to all members

NEXT MEETING – June 11 at 4:00 pm

Meetings will continue to be held at Sunrise Senior Living on the second Thursday of each month from 4:00-5:30 p.m.

Jan Seaman
Secretary

NOTES FROM THE ANNUAL MEETING

At this year's annual meeting there were discussions about smart-growth concepts with regard to transportation and local water issues.

- Suggestions were requested for suitable places to hold our Hot Topics luncheons since Ruffino's is no longer available for that purpose.
- All positions were adopted as amended and as presented. Positions were published previously in the Voter.
- Molly Faust has resigned from her board position as the editor of the Voters Guide. Mary Anne Stinner has resigned as Environmental Action Chair, but will continue as

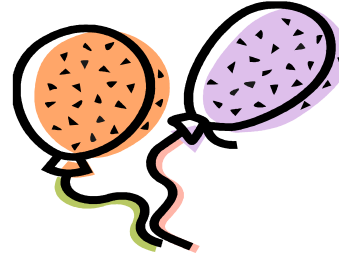
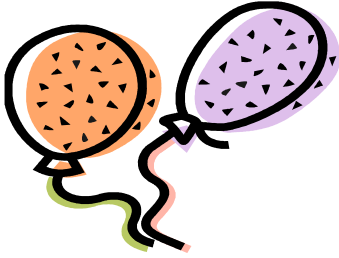
the League's representative with the Little Lehigh River Coalition and will receive Action Alerts from both the LWVUS and LWVPA. Charlie Dent has been present at at least one of the Coalition's meeting. Both board positions are open. If any member is interested in either of these positions, please contact a member of the board for more information.

- We decided to hold a debate for candidates in the race for Lower Macungie Township Commissioner. Due to the change to First Class Township in 2007, three commissioners must be elected for four-year terms, and two commissioners for two-year terms. Part of the program will focus on environmental

issues. Pat Swan, Mary Anne Stinner, Madeleine Reilly and Mildred Paret offered to help.

- We need to review our Transportation policy, and Barbara Williams will help with that review.
- Elizabeth Bodien reported on the pending status of the Fair Elections Now legislation (S.752 and HR 1826) and a meeting with Congressman Charlie Dent on the subject.
- County pre-election finance reports have been posted on the county's website by Doris Glaessmann.

Caryn Shoenthal



Summer Brunch

Take a ride in the country and join us for program planning, convention review and just plain socializing.

July 13th at 10:00 AM

Email Margie Dunn at mdunn75@hotmail.com to reserve your spot around the tables

Directions from Allentown- Take Rt. 22 West then merge onto Rt. 78 West Exit at New Smithville (exit after Rt.100) Turn right onto Rt. 863 North. Follow this for about 3 miles. When Rt. 863 makes a sharp left, you will go straight onto Werley's Corner Road. Go 1 more mile until you come to Carpet Rd. (Look for a one room school house on the right) Turn left onto Carpet Road. It is the second driveway on your right. There is plenty of parking on the side of the road.

8411 Carpet Road.

610 298-8946

LWVUS CLIMATE CHANGE TASK

League of Women Voters
of Lehigh County

P. O. Box 3275
Allentown, PA 18106
610-432-1456
LWVPA Hotline: 1-800-692-7281

President: Mary Anne Rood,
610-395-3464
Membership: Margie Dunn,
610-298-8946

Caryn Shoenthal, Editor
Email: CarynCW@yahoo.com
Phone: 610-261-0596



The LWVUS Climate Change Task Force was first established in 2007. League members who had pertinent experience and expertise were recruited through an application process. In 2008, due to attrition and an expanded requirement for more member information, new members were recruited to the task force.

The task force works to provide information and assistance to the LWVUS Board and staff on issues surrounding the broad topic of climate change. The task force has produced a number of papers dealing with a variety of issues and meets periodically via conference call to discuss new assignments.

There are eleven members of the task force from all over the country. These task force members generously share their time and expertise with members of the LWV to provide pertinent and useful information to League members to assist in their work on climate change.

From the League of Women Voters of the US Website.

LEAGUE ISSUES AND POSITIONS

Issues and action are the League's reason for "being" and the basis for action. The League's clear-eyed, nonpartisan investigation of government policies and legislation that affect the lives of all Pennsylvanians has led to our well deserved reputation as a reliable source of information.

Local chapters work simultaneously on local, state, national, and regional levels. Issues reflect community concerns and range from local parks to international trade, from child care to civil liberties, from water quality to international relations, from health care to land use planning.

We forge our political strategies through a six step process:

- observation
- research and study
- discussion with a goal of reaching consensus
- education of the public
- lobbying elected and governmental officials legal action when appropriate

From the League of Women Voters of Pennsylvania Website.

ADVERTISING RATES

Advertising Rates for 2009 for The Lehigh County Voter are as follows:
Business Card Size - \$75 a year
Full page - \$100 for 1 month, \$500 for a year
Half Page - \$50 for 1 month, \$250 for a year.

Advertisers' web links will be publicized in The Voter, both on-line and in hard copy. The ad year runs from July 1 to June 30. The rate for advertisers whose ads are received during the year will be pro-rated. Contact the editor of The Voter, or any board member for additional information or to arrange your advertising.

WHEN PATRONIZING OUR SPONSORS, PLEASE REMEMBER TO
LET THEM KNOW YOU SAW THEIR ADVERTISEMENT IN
THE LEHIGH COUNTY VOTER

Dan's Camera helps non-profit organizations with fund raising by offering a fifty cent rebate to the organizations for each roll of film members bring in to be developed. Members must sign a logbook for LWV. This is a very easy way to help raise funds for the League. Please see Dan's advertisement.

Scherline & Associates

ATTORNEYS AT LAW

SERIOUS INJURY LAWYERS

Serving the Lehigh Valley community since 1976

610-437-1100

512 Walnut St., Allentown, PA
610-861-1100 Bethlehem • 610-258-8000 Easton

422 Coventry Drive, Phillipsburg, NJ 08865

908-859-2900

Hours by appointment only

www.scherlinelaw.com

Member of PA, NJ, NY Bar Associations

610-398-1324
610-395-0444
610-335-4903 fax

Brent A. McNabb, Owner
4948 Hamilton Boulevard
Wescosville, PA 18106



McNabb's Service & Repairs

**50 Years of Continued Service
Taking Care of All Your Needs**

**Creative Design Without Boundaries
...KCE Civil Engineers and Surveyors**

KCE
KEYSTONE
CONSULTING
ENGINEERS, INC.

**Three Regional
Locations**

Wescosville, PA
(610) 395-0971

Bethlehem, PA
(610) 865-4555

Kresgeville, PA
(610) 681-5233

www.kce-inc.com

WHEN PATRONIZING OUR SPONSORS, PLEASE REMEMBER TO
LET THEM KNOW YOU SAW THEIR ADVERTISEMENT IN
THE LEHIGH COUNTY VOTER

THE LEAGUE OF WOMEN VOTERS

League of Women Voters of Lehigh County
P.O. Box 3275
Allentown PA 18106



MEMBERSHIP APPLICATION LEAGUE OF WOMEN VOTERS OF LEHIGH COUNTY

Name _____

Street _____

City, State, Zip _____

Phone, E-mail _____

Membership dues include membership in the League of Women Voters of the United States (LWVUS) and the League of Women Voters of Pennsylvania (LWVPA) and a subscription to the local, state and national *Voter*.

League dues and contributions are not tax-deductible as a charitable donation.

Contributions to the LWV Education Fund (LWVEF) are tax-deductible.

Membership in the League of Women Voters is open to all citizens of voting age. Associate membership is available for non-citizens and for those under age eighteen.

ANNUAL DUES	\$55.00 individual
2009-2010	\$82.50 household
	\$25.00 full-time student

Contact membership secretary for details of pro-rated dues amounts.

Please make check payable to
LWVLC and mail to:
LWVLC
c/o Margie Dunn
8411 Carpet Road
New Tripoli, PA 18066